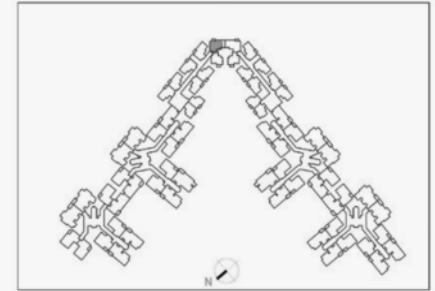
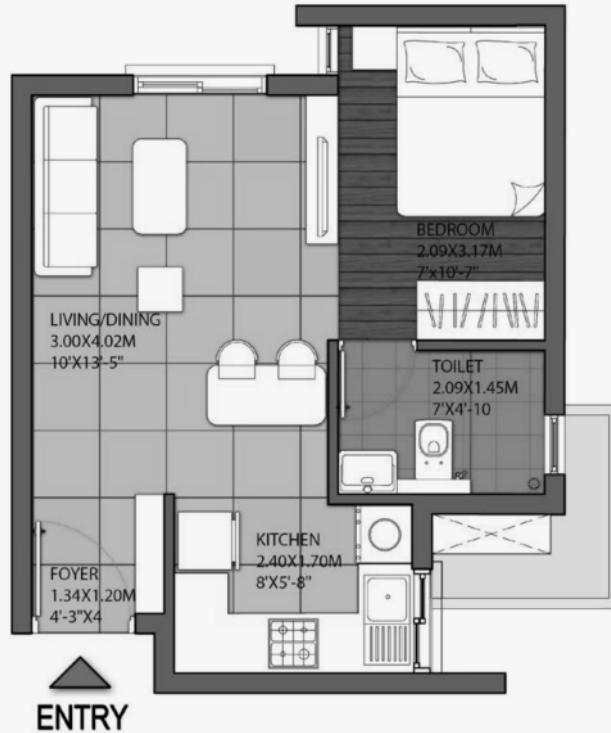


STUDIO UNIT



SUPER BUILT-UP AREA

46.87 Sq.m (505 Sq.ft.)

UNIT CARPET AREA

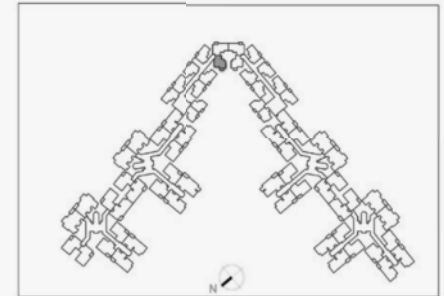
28.47 Sq.m (306 Sq.ft.)

The information depicted herein viz., master plans, floor plans, furniture layout, fittings, illustrations, specifications, designs, dimensions, rendered views, colours, amenities and facilities etc., are subject to change without notifications as may be required by the relevant authorities or the developer's architect, and cannot form part of an offer or contract. Whilst every care is taken in providing this information, the Developer cannot be held liable for variations. All illustrations and pictures are artist's impression only. The information are subject to variations, additions, deletions, substitutions and modifications as may be recommended by the company's architect and/or the relevant approving authorities. The Developer is wholly exempt from any liability on account of any claim in this regard. (1 square metre = 10.764 square feet), E & OE. All dimensions and calculations are done in metric system (M/Sq.m), and imperial system (Ft/Sq.ft) shown is for reference only. All dimensions indicated in the drawing are from unfinished surfaces, excluding plaster thickness and tile thickness.

IVORY
at

BRIGADE
ORCHARDS

1 BHK UNIT (1 BEDROOM + 1 TOILET)



SUPER BUILT-UP AREA

56.94 Sq.m (613 Sq.ft.)

UNIT CARPET AREA

32.47 Sq.m (349.5 Sq.ft.)

BALCONY CARPET AREA

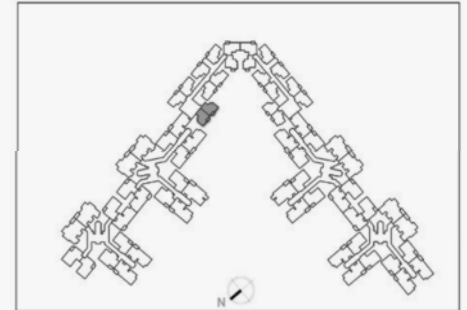
1.99 sq.m (21.42 Sq.ft.)

The information depicted herein viz., master plans, floor plans, furniture layout, fittings, illustrations, specifications, designs, dimensions, rendered views, colours, amenities and facilities etc., are subject to change without notifications as may be required by the relevant authorities or the developer's architect, and cannot form part of an offer or contract. Whilst every care is taken in providing this information, the Developer cannot be held liable for variations. All illustrations and pictures are artist's impression only. The information are subject to variations, additions, deletions, substitutions and modifications as may be recommended by the company's architect and/or the relevant approving authorities. The Developer is wholly exempt from any liability on account of any claim in this regard. (1 square metre = 10.764 square feet), E & OE. All dimensions and calculations are done in metric system (M/Sq.m), and imperial system (Ft/Sq.ft) shown is for reference only. All dimensions indicated in the drawing are from unfinished surfaces, excluding plaster thickness and tile thickness.

IVORY
at

BRIGADE
ORCHARDS

1 BHK UNIT (1 BEDROOM + 1 TOILET)



SUPER BUILT-UP AREA

57.96 Sq.m (624 Sq.ft.)

UNIT CARPET AREA

33.71 Sq.m (362.85 Sq.ft.)

BALCONY CARPET AREA

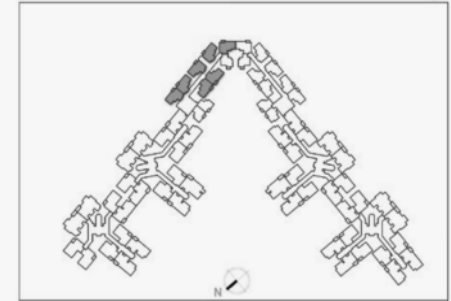
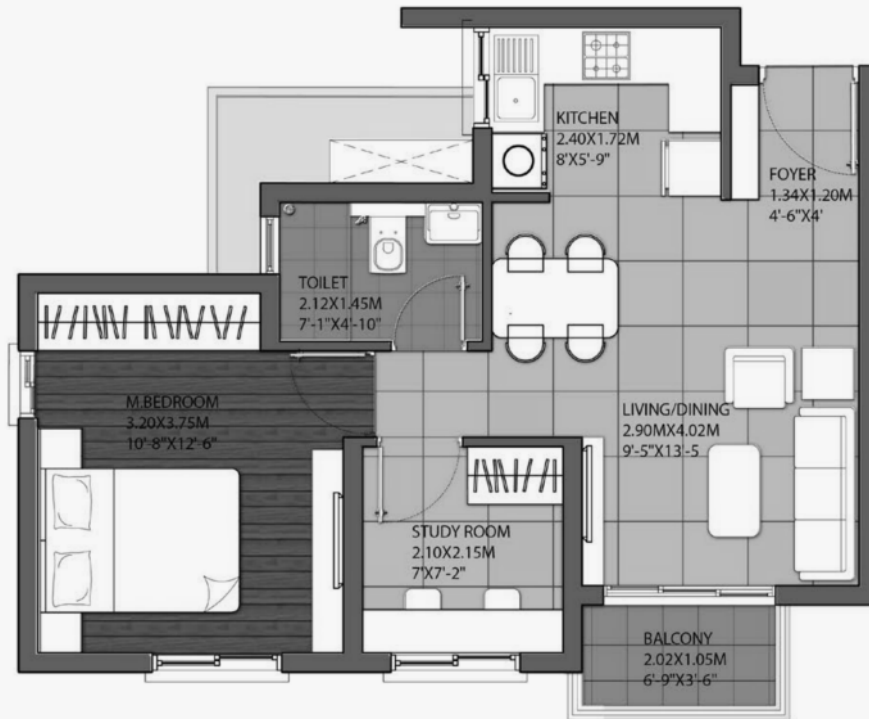
1.99 sq.m (21.42 Sq.ft.)

The information depicted herein viz., master plans, floor plans, furniture layout, fittings, illustrations, specifications, designs, dimensions, rendered views, colours, amenities and facilities etc., are subject to change without notifications as may be required by the relevant authorities or the developer's architect, and cannot form part of an offer or contract. Whilst every care is taken in providing this information, the Developer cannot be held liable for variations. All illustrations and pictures are artist's impression only. The information are subject to variations, additions, deletions, substitutions and modifications as may be recommended by the company's architect and/or the relevant approving authorities. The Developer is wholly exempt from any liability on account of any claim in this regard. (1 square metre = 10.764 square feet), E & OE. All dimensions and calculations are done in metric system (M/Sq.m), and imperial system (Ft/Sq.ft) shown is for reference only. All dimensions indicated in the drawing are from unfinished surfaces, excluding plaster thickness and tile thickness.

IVORY
at

BRIGADE
ORCHARDS

1.5 BHK UNIT (1 BEDROOM + 1 STUDY + 1 TOILET)



SUPER BUILT-UP AREA

70.97 Sq.m (764 Sq.ft.)

UNIT CARPET AREA

42.00 Sq.m (452.08 Sq.ft.)

BALCONY CARPET AREA

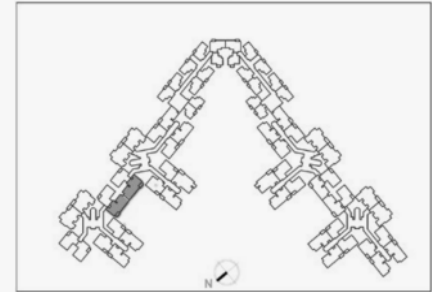
2.12 sq.m (22.81 Sq.ft.)

The information depicted herein viz., master plans, floor plans, furniture layout, fittings, illustrations, specifications, designs, dimensions, rendered views, colours, amenities and facilities etc., are subject to change without notifications as may be required by the relevant authorities or the developer's architect, and cannot form part of an offer or contract. Whilst every care is taken in providing this information, the Developer cannot be held liable for variations. All illustrations and pictures are artist's impression only. The information are subject to variations, additions, deletions, substitutions and modifications as may be recommended by the company's architect and/or the relevant approving authorities. The Developer is wholly exempt from any liability on account of any claim in this regard. (1 square metre = 10.764 square feet), E & OE. All dimensions and calculations are done in metric system (M/Sq.m), and imperial system (Ft/Sq.ft) shown is for reference only. All dimensions indicated in the drawing are from unfinished surfaces, excluding plaster thickness and tile thickness.

IVORY
at

BRIGADE
ORCHARDS

2 BHK UNIT (2 BEDROOM + 2 TOILET)



SUPER BUILT-UP AREA

81.59 Sq.m (878 Sq.ft.)

UNIT CARPET AREA

51.36 Sq.m (552.83 Sq.ft.)

BALCONY CARPET AREA

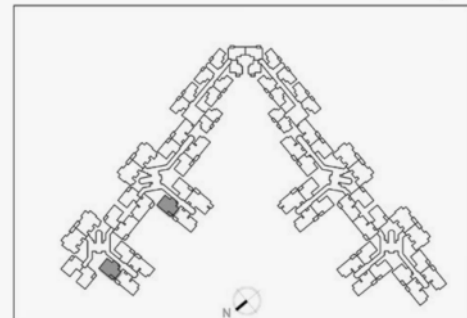
3.77 sq.m (40.58 Sq.ft.)

The information depicted herein viz., master plans, floor plans, furniture layout, fittings, illustrations, specifications, designs, dimensions, rendered views, colours, amenities and facilities etc., are subject to change without notification as may be required by the relevant authorities or the developer's architect, and cannot form part of an offer or contract. Whilst every care is taken in providing this information, the Developer cannot be held liable for variations. All illustrations and pictures are artist's impression only. The information are subject to variations, additions, deletions, substitutions and modifications as may be recommended by the company's architect and/or the relevant approving authorities. The Developer is wholly exempt from any liability on account of any claim in this regard. (1 square metre = 10.764 square feet). E & OE. All dimensions and calculations are done in metric system (M/Sq.m), and imperial system (Ft/Sq.ft) shown is for reference only. All dimensions indicated in the drawing are from unfinished surfaces, excluding plaster thickness and tile thickness.

IVORY
at

BRIGADE
ORCHARDS

2 BHK UNIT (2 BEDROOM + 2 TOILET)



SUPER BUILT-UP AREA

88.04 Sq.m (948 Sq.ft.)

UNIT CARPET AREA

58.46 Sq.m (629.25 Sq.ft.)

BALCONY CARPET AREA

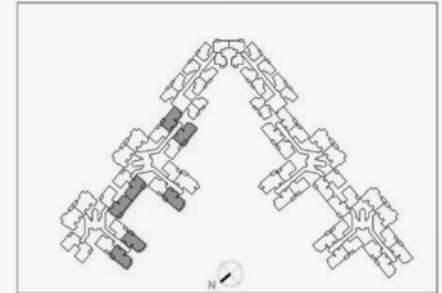
2.89 sq.m (31.10 Sq.ft.)

The information depicted herein viz., master plans, floor plans, furniture layout, fittings, illustrations, specifications, designs, dimensions, rendered views, colours, amenities and facilities etc., are subject to change without notification as may be required by the relevant authorities or the developer's architect, and cannot form part of an offer or contract. Whilst every care is taken in providing this information, the Developer cannot be held liable for variations. All illustrations and pictures are artist's impression only. The information are subject to variations, additions, deletions, substitutions and modifications as may be recommended by the company's architect and/or the relevant approving authorities. The Developer is wholly exempt from any liability on account of any claim in this regard. (1 square metre = 10.764 square feet). E & OE. All dimensions and calculations are done in metric system (M/Sq.m), and imperial system (Ft/Sq.ft) shown is for reference only. All dimensions indicated in the drawing are from unfinished surfaces, excluding plaster thickness and tile thickness.

IVORY
at

BRIGADE
ORCHARDS

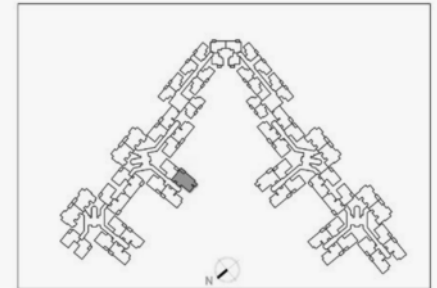
3 BHK UNIT (3 BEDROOM + 2 TOILET)



SUPER BUILT-UP AREA
105.12 Sq.m (1131 Sq.ft.)
UNIT CARPET AREA
69.40 Sq.m (747 Sq.ft.)
BALCONY CARPET AREA
3.77 sq.m (40.57 Sq.ft.)

The information depicted herein viz., master plans, floor plans, furniture layout, fittings, illustrations, specifications, designs, dimensions, rendered views, colours, amenities and facilities etc., are subject to change without notifications as may be required by the relevant authorities or the developer's architect, and cannot form part of an offer or contract. Whilst every care is taken in providing this information, the Developer cannot be held liable for variations. All illustrations and pictures are artist's impression only. The information are subject to variations, additions, deletions, substitutions and modifications as may be recommended by the company's architect and/or the relevant approving authorities. The Developer is wholly exempt from any liability on account of any claim in this regard. (1 square metre = 10.764 square feet). E & OE. All dimensions and calculations are done in metric system (M/Sq.m), and imperial system (Ft/Sq.ft) shown is for reference only. All dimensions indicated in the drawing are from unfinished surfaces, excluding plaster thickness and tile thickness.

3 BHK UNIT (3 BEDROOM + 3 TOILET)



SUPER BUILT-UP AREA

121.68 Sq.m (1310 Sq.ft.)

UNIT CARPET AREA

80.33 Sq.m (864.66 Sq.ft.)

BALCONY CARPET AREA

4.88 sq.m (52.52 Sq.ft.)

The information depicted herein viz., master plans, floor plans, furniture layout, fittings, illustrations, specifications, designs, dimensions, rendered views, colours, amenities and facilities etc., are subject to change without notifications as may be required by the relevant authorities or the developer's architect, and cannot form part of an offer or contract. Whilst every care is taken in providing this information, the Developer cannot be held liable for variations. All illustrations and pictures are artist's impression only. The information are subject to variations, additions, deletions, substitutions and modifications as may be recommended by the company's architect and/or the relevant approving authorities. The Developer is wholly exempt from any liability on account of any claim in this regard. (1 square metre = 10.764 square feet), E & OE. All dimensions and calculations are done in metric system (M/Sq.m), and imperial system (Ft/Sq.ft) shown is for reference only. All dimensions indicated in the drawing are from unfinished surfaces, excluding plaster thickness and tile thickness.

IVORY
at

BRIGADE
ORCHARDS