

# DEODAR BLOCK SITE PLAN

**BRIGADE**  
**ORCHARDS**  
 Devanahalli



- |                            |                           |   |                        |
|----------------------------|---------------------------|---|------------------------|
| 1. Entry / Exit            | 8. Grass Crete            | 15. Central Lawn Expanse /<br>Event Lawns | 20. Flower Beds        |
| 2. Totem Pole              | 9. Water Body             | 16. Reflexology Pathwalk                  | 21. Old Folk's Area    |
| 3. Security Room           | 10. Tree Plaza            | 17. Wooden Area                           | 22. Amphitheatre       |
| 4. Differential Paved Area | 11. Children's Play Area  | 18. Play Lawns                            | 23. Leisure Court      |
| 5. Driveway                | 12. Leisure Pavilion      | 19. Cognitive Play Area /<br>Snail Mound  | 24. Gossip Court       |
| 6. Car Parkings            | 13. Multipurpose Court    |   | 25. Informal Play Area |
| 7. Fire Driveway           | 14. Senior Citizen's Area |   | 26. Transformer Yard   |

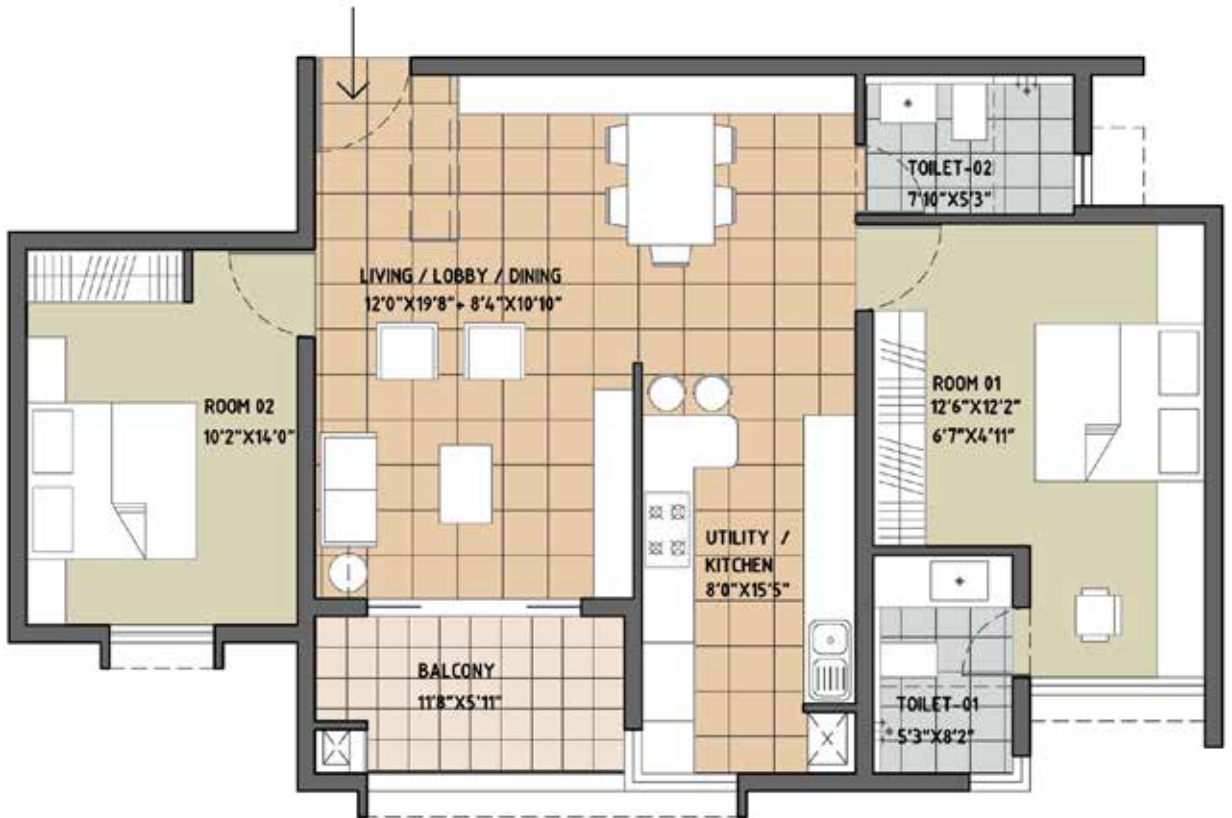
The information depicted herein viz., master plans, floor plans, furniture layout, fittings, illustrations, specifications, designs, dimensions, rendered views, colours, amenities and facilities etc., are subject to change without notifications as may be required by the relevant authorities or the developer's architect, and cannot form part of an offer or contract. Whilst every care is taken in providing this information, the Developer cannot be held liable for variations. All illustrations and pictures are artist's impression only. The information are subject to variations, additions, deletions, substitutions and modifications as may be recommended by the company's architect and/or the relevant approving authorities. The Developer is wholly exempt from any liability on account of any claim in this regard. (1 square metre = 10.764 square feet). E & OE.

# TYPICAL UNIT PLAN

2-Bedroom Unit

**BRIGADE**  
**ORCHARDS**  
Devanahalli

## KEY PLAN



SUPER BUILT-UP AREA	CARPET AREA	TYPICAL UNIT NUMBERS
1380 Sq.ft. / 128.21 Sq.m.	892.01 Sq.ft. / 82.87 Sq.m.	A G07-A707, B G14-B 514, C G21-C 521

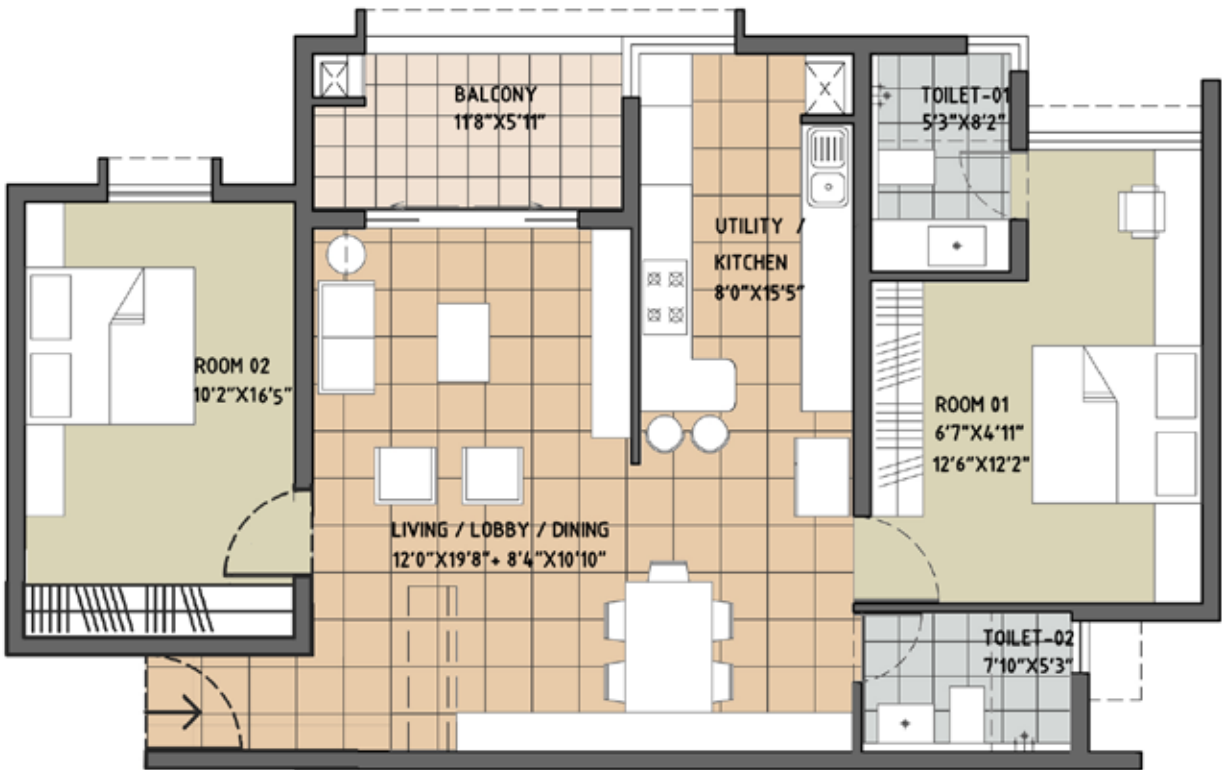
The information depicted herein viz., master plans, floor plans, furniture layout, fittings, illustrations, specifications, designs, dimensions, rendered views, colours, amenities and facilities etc., are subject to change without notifications as may be required by the relevant authorities or the developer's architect, and cannot form part of an offer or contract. Whilst every care is taken in providing this information, the Developer cannot be held liable for variations. All illustrations and pictures are artist's impression only. The information are subject to variations, additions, deletions, substitutions and modifications as may be recommended by the company's architect and/or the relevant approving authorities. The Developer is wholly exempt from any liability on account of any claim in this regard. (1 square metre = 10.764 square feet), E & OE.

# TYPICAL UNIT PLAN

2-Bedroom Unit

**BRIGADE**  
**ORCHARDS**  
Devanahalli

## KEY PLAN



SUPER BUILT-UP AREA	CARPET AREA	TYPICAL UNIT NUMBERS
1390 Sq.ft. / 129.14 Sq.m.	944 Sq.ft. / 87.72 Sq.m.	A G06-A 706

The information depicted herein viz., master plans, floor plans, furniture layout, fittings, illustrations, specifications, designs, dimensions, rendered views, colours, amenities and facilities etc., are subject to change without notifications as may be required by the relevant authorities or the developer's architect, and cannot form part of an offer or contract. Whilst every care is taken in providing this information, the Developer cannot be held liable for variations. All illustrations and pictures are artist's impression only. The information are subject to variations, additions, deletions, substitutions and modifications as may be recommended by the company's architect and/or the relevant approving authorities. The Developer is wholly exempt from any liability on account of any claim in this regard. (1 square metre = 10.764 square feet), E & OE.

# TYPICAL UNIT PLAN

2-Bedroom Unit

**BRIGADE**  
**ORCHARDS**  
Devanahalli

## KEY PLAN



SUPER BUILT-UP AREA	CARPET AREA	TYPICAL UNIT NUMBERS
1360 Sq.ft. / 126.35 Sq.m.	892 Sq.ft. / 82.87 Sq.m.	C 119-C 719, D G23-D 723

The information depicted herein viz., master plans, floor plans, furniture layout, fittings, illustrations, specifications, designs, dimensions, rendered views, colours, amenities and facilities etc., are subject to change without notifications as may be required by the relevant authorities or the developer's architect, and cannot form part of an offer or contract. Whilst every care is taken in providing this information, the Developer cannot be held liable for variations. All illustrations and pictures are artist's impression only. The information are subject to variations, additions, deletions, substitutions and modifications as may be recommended by the company's architect and/or the relevant approving authorities. The Developer is wholly exempt from any liability on account of any claim in this regard. (1 square metre = 10.764 square feet), E & OE.



# TYPICAL UNIT PLAN

2-Bedroom Unit

**BRIGADE**  
**ORCHARDS**  
Devanahalli

## KEY PLAN



SUPER BUILT-UP AREA	CARPET AREA	TYPICAL UNIT NUMBERS
1360 Sq.ft. / 126.35 Sq.m.	892 Sq.ft. / 82.87 Sq.m.	F G47-F 747

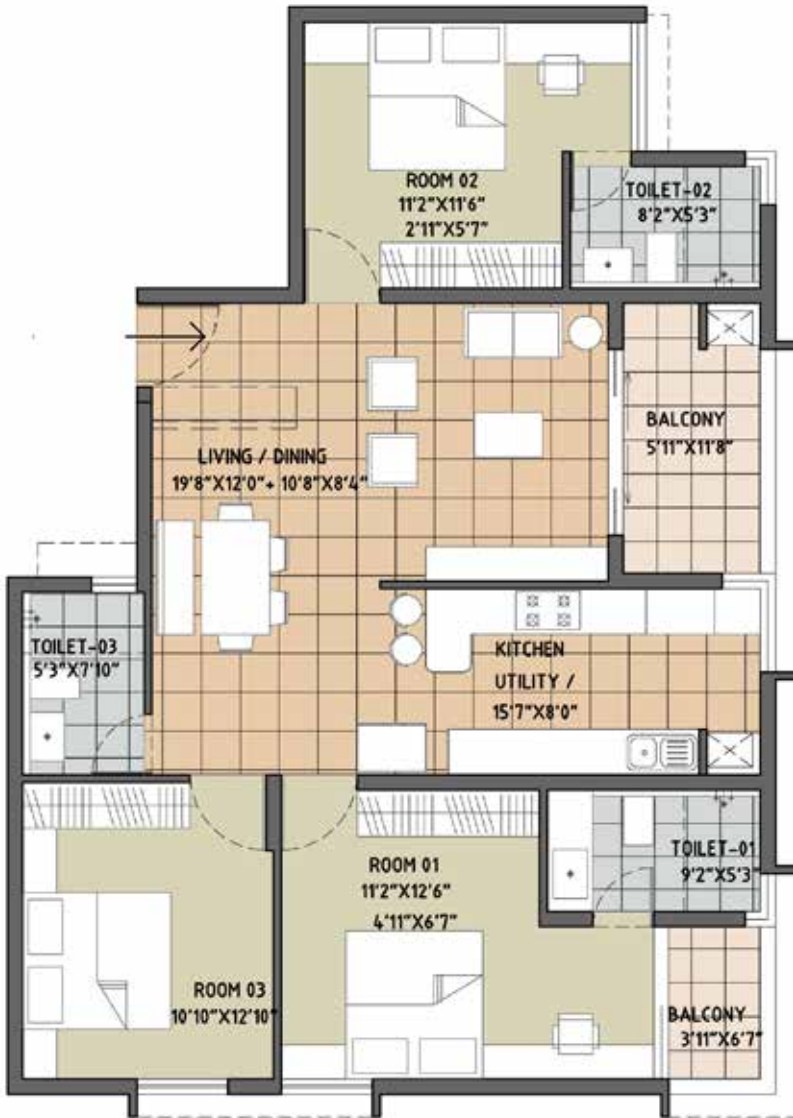
The information depicted herein viz., master plans, floor plans, furniture layout, fittings, illustrations, specifications, designs, dimensions, rendered views, colours, amenities and facilities etc., are subject to change without notifications as may be required by the relevant authorities or the developer's architect, and cannot form part of an offer or contract. Whilst every care is taken in providing this information, the Developer cannot be held liable for variations. All illustrations and pictures are artist's impression only. The information are subject to variations, additions, deletions, substitutions and modifications as may be recommended by the company's architect and/or the relevant approving authorities. The Developer is wholly exempt from any liability on account of any claim in this regard. (1 square metre = 10.764 square feet), E & OE.

# TYPICAL UNIT PLAN

2-Bedroom Unit

**BRIGADE**  
**ORCHARDS**  
Devanahalli

## KEY PLAN



SUPER BUILT-UP AREA	CARPET AREA	TYPICAL UNIT NUMBERS
1670 Sq.ft. / 155.15 Sq.m.	1077 Sq.ft. / 100.08 Sq.m.	A G01-A 701, B G08-B 708, C G15-C 715

The information depicted herein viz., master plans, floor plans, furniture layout, fittings, illustrations, specifications, designs, dimensions, rendered views, colours, amenities and facilities etc., are subject to change without notifications as may be required by the relevant authorities or the developer's architect, and cannot form part of an offer or contract. Whilst every care is taken in providing this information, the Developer cannot be held liable for variations. All illustrations and pictures are artist's impression only. The information are subject to variations, additions, deletions, substitutions and modifications as may be recommended by the company's architect and/or the relevant approving authorities. The Developer is wholly exempt from any liability on account of any claim in this regard. (1 square metre = 10.764 square feet), E & OE.

# TYPICAL UNIT PLAN

## 2-Bedroom Unit

**BRIGADE**  
**ORCHARDS**  
Devanahalli

### KEY PLAN



SUPER BUILT-UP AREA	CARPET AREA	TYPICAL UNIT NUMBERS
1700 Sq.ft. / 157.94 Sq.m.	1093 Sq.ft. / 101.58 Sq.m.	D 127-D 727

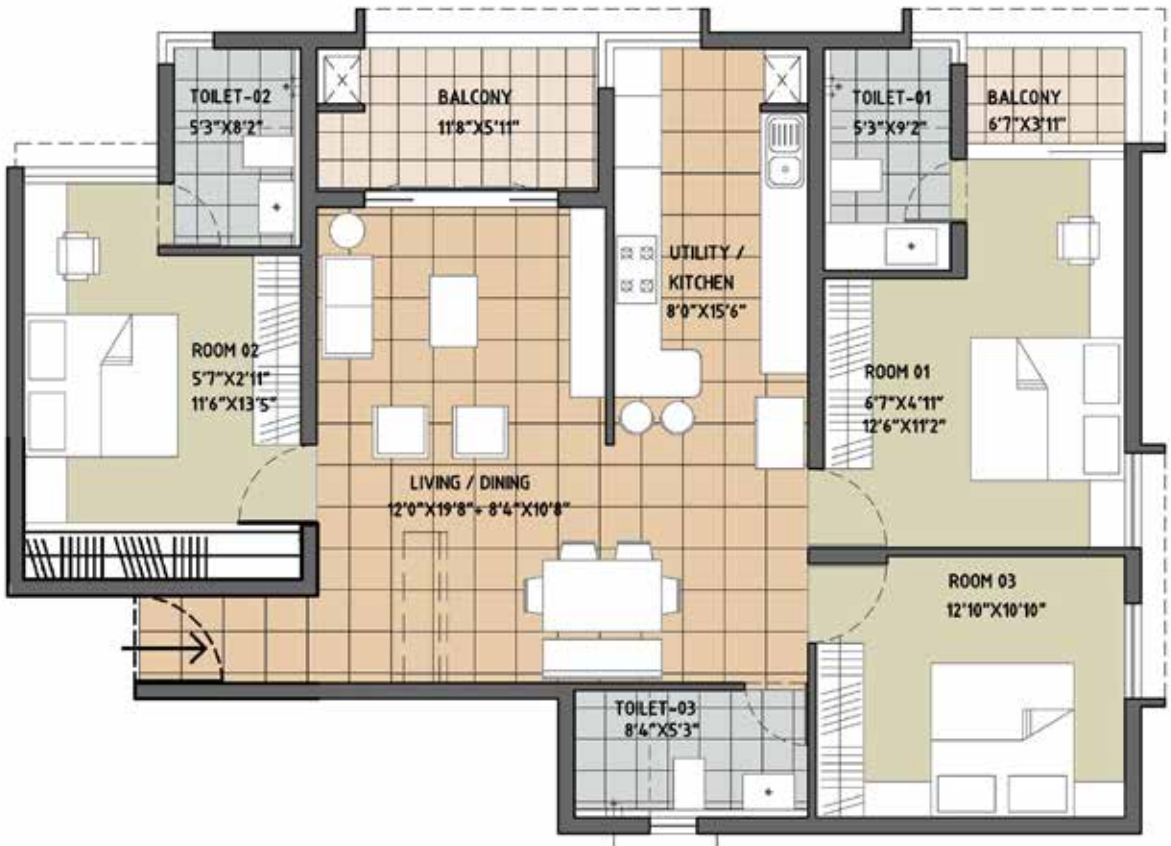
The information depicted herein viz., master plans, floor plans, furniture layout, fittings, illustrations, specifications, designs, dimensions, rendered views, colours, amenities and facilities etc., are subject to change without notifications as may be required by the relevant authorities or the developer's architect, and cannot form part of an offer or contract. Whilst every care is taken in providing this information, the Developer cannot be held liable for variations. All illustrations and pictures are artist's impression only. The information are subject to variations, additions, deletions, substitutions and modifications as may be recommended by the company's architect and/or the relevant approving authorities. The Developer is wholly exempt from any liability on account of any claim in this regard. (1 square metre = 10.764 square feet), E & OE.

# TYPICAL UNIT PLAN

2-Bedroom Unit

**BRIGADE**  
**ORCHARDS**  
Devanahalli

**KEY PLAN**



SUPER BUILT-UP AREA	CARPET AREA	TYPICAL UNIT NUMBERS
1740 Sq.ft. / 161.65 Sq.m.	1145 Sq.ft. / 106.33 Sq.m.	D 124-D 724

The information depicted herein viz., master plans, floor plans, furniture layout, fittings, illustrations, specifications, designs, dimensions, rendered views, colours, amenities and facilities etc., are subject to change without notifications as may be required by the relevant authorities or the developer's architect, and cannot form part of an offer or contract. Whilst every care is taken in providing this information, the Developer cannot be held liable for variations. All illustrations and pictures are artist's impression only. The information are subject to variations, additions, deletions, substitutions and modifications as may be recommended by the company's architect and/or the relevant approving authorities. The Developer is wholly exempt from any liability on account of any claim in this regard. (1 square metre = 10.764 square feet). E & OE.



# SPECIFICATIONS

## STRUCTURE

Seismic Zone II compliant RCC structure  
Precast concrete panels for walls & slabs  
(only for Cedar Block)  
All internal walls are smoothly finished  
Staircase and lifts in each core

## PAINTING

**External Finishes:** Textured paint  
**Internal Walls:** Plastic emulsion paint  
**Ceiling:** Acrylic emulsion paint Enamel paint for metal work/door

## FLOORING

**Foyer, Living & Dining:** Vitrified tiles  
**Master Bedroom:** Laminated wooden flooring  
**Other Bedrooms:** Vitrified tiles  
**Kitchen & Utility:** Vitrified tiles  
**Balcony:** Anti-skid ceramic tiles  
**Toilets:** Ceramic tiles

## KITCHEN

Provision for Modular Kitchen  
Provision for water purifier point, refrigerator point & microwave point  
Provision for washing machine point in utility area  
Cladding with glazed tiles above the kitchen platform - 2 feet height (only for Deodar Block)  
Water purifier point in kitchen

## DOORS AND WINDOWS

**Entrance Door:** Lacquered PU Finished natural solid wood frame & Architrave Shutter with both sides Masonite skin or equivalent  
**Internal Doors:** Enamel painted hardwood frame & Architrave. Shutter with both sides Masonite skin or equivalent

**Toilet Doors:** Enamel painted hardwood frame & Architrave. Shutter externally finished with Masonite skin & laminated internally

**Windows:** UPVC/Anodized Aluminium windows with sliding shutter, bug screen and safety grill

## TOILETS

**Chromium Plated Fittings:** Jaguar or equivalent  
a. Hot & Cold basin mixer for all toilets  
b. Wall mixer with shower head  
c. Health faucet  
d. Provision for exhaust fan  
e. Provision for geyser connection in all the toilets

**Ceramic fittings:** Parryware or equivalent Granite counter top wash basin in Master Bedroom Toilet and wall mounted wash basins in other toilets (except in 1BHK)

**Wall Mounted EWC in all Toilets:** White Parryware or equivalent ceramic tile dado up to 7' ht.

**Toilet Accessories:** Towel rod, soap dish, paper holder, robe hook and shower partition in Master Bedroom Toilet (except in 1BHK)

## PLUMBING & SANITARY LINES

UPVC lines for sewage disposal CPVC lines for water supply

## ELECTRICAL

### Power Load

**1-Bedroom Apartment:** 2 kW (only for Cedar Block)

**2-Bedroom Apartments:** 4 kW

**3-Bedroom Apartments:** 6 kW

### Power backup

**1-Bedroom Apartment:** 1 kW (only for Cedar Block)

**2-Bedroom Apartments:** 2 kW

**3-Bedroom Apartments:** 3 kW

100% power backup for common areas and lifts

Adequate light and power points